

---

# GAM RUN 13-028: BLUEBONNET GROUNDWATER CONSERVATION DISTRICT MANAGEMENT PLAN

by William Kohlrenken  
Texas Water Development Board  
Groundwater Resources Division  
Groundwater Availability Modeling Section  
(512) 463-8279  
August 30, 2013



*Cynthia K. Ridgeway is the Manager of the Groundwater Availability Modeling Section and is responsible for oversight of work performed by William Kohlrenken under her direct supervision. The seal appearing on this document was authorized by Cynthia K. Ridgeway, P.G. 471 on August 30, 2013.*

*This page is intentionally blank*

---

# GAM RUN 13-028: BLUEBONNET GROUNDWATER CONSERVATION DISTRICT MANAGEMENT PLAN

by William Kohlrenken  
Texas Water Development Board  
Groundwater Resources Division  
Groundwater Availability Modeling Section  
(512) 463-8279  
August 30, 2013

## ***EXECUTIVE SUMMARY:***

Texas State Water Code, Section 36.1071, Subsection (h), states that, in developing its groundwater management plan, a groundwater conservation district shall use groundwater availability modeling information provided by the executive administrator of the Texas Water Development Board (TWDB) in conjunction with any available site-specific information provided by the district for review and comment to the executive administrator. Information derived from groundwater availability models that shall be included in the groundwater management plan includes:

- the annual amount of recharge from precipitation to the groundwater resources within the district, if any;
- for each aquifer within the district, the annual volume of water that discharges from the aquifer to springs and any surface water bodies, including lakes, streams, and rivers; and
- the annual volume of flow into and out of the district within each aquifer and between aquifers in the district.

This report—Part 2 of a two-part package of information from the TWDB to Bluebonnet Groundwater Conservation District—fulfills the requirements noted above. Part 1 of the two-part package is the Historical Water Use/State Water Plan data report. The District should have received, or will receive, this data report from the TWDB Groundwater Technical Assistance Section. Questions about the data report can be directed to Mr. Stephen Allen, [stephen.allen@twdb.texas.gov](mailto:stephen.allen@twdb.texas.gov), (512) 463-7317.

The groundwater management plan for Bluebonnet Groundwater Conservation District should be adopted by the district on or before January 7, 2015 and submitted to the executive administrator of the TWDB on or before February 6, 2015. The current management plan for Bluebonnet Groundwater Conservation District expires on April 7, 2015.

This report discusses the methods, assumptions, and results from model runs using the groundwater availability models for the Carrizo-Wilcox, Queen City, Sparta, Yegua-Jackson aquifers, and Gulf Coast Aquifer System. This model run replaces the results of GAM Run 08-87 (Aschenbach, 2008). GAM Run 13-028 includes results from the groundwater availability model for the Yegua-Jackson Aquifer. It also meets current standards set after the release of GAM Run 08-87 including use of the extent of the official aquifer boundaries within the district rather than the entire active area of the model within the district. Tables 1 through 5 summarize the groundwater availability model data required by the statute, and Figures 1 through 5 show the area of the model from which the values in the tables were extracted. If after review of the figures, Bluebonnet Groundwater Conservation District determines that the district boundaries used in the assessment do not reflect current conditions, please notify the Texas Water Development Board immediately.

Although the Brazos River Alluvium Aquifer is also within the Bluebonnet Groundwater Conservation District, a groundwater availability model for this aquifer has not been developed at this time. If the district would like information for the Brazos River Alluvium Aquifer, they may request it from the Groundwater Technical Assistance Section of the Texas Water Development Board.

## ***METHODS:***

In accordance with the provisions of the Texas State Water Code, Section 36.1071, Subsection (h), the groundwater availability models for the central portion of the Carrizo-Wilcox, Queen City, and Sparta aquifers, the Yegua-Jackson Aquifer, and the northern portion of the Gulf Coast Aquifer System were run for this analysis. Bluebonnet Groundwater Conservation District water budgets were extracted for the historical model periods (1980-2000 for the central portion of the Carrizo-Wilcox, Queen City, Sparta aquifers, 1980-1997 for the Yegua-Jackson Aquifer, and 1980-2000 for the northern portion of the Gulf Coast Aquifer System) using ZONEBUDGET Version 3.01 (Harbaugh, 2009). The average annual water budget values for recharge, surface water outflow, inflow to the district, outflow from the district, net inter-aquifer flow (upper), and net inter-aquifer flow (lower) for the portion of the aquifer located within the district is summarized in this report.

The groundwater availability model for the northern portion of the Gulf Coast Aquifer uses MODFLOW's General Head Boundary Package to simulate groundwater recharge and groundwater-surface water interaction. The general head boundary was assigned over the outcrop areas of the aquifer. To estimate groundwater recharge and groundwater-surface water interaction separately, we zoned the surface water courses separate from the remainder of the outcrop areas in ArcGIS. We then calculated the water budget of these zones using ZONEBUDGET Version 3.01 (Harbaugh, 2009). This approach is different than those used in the past in that we are using a different program to extract the data from the model. We are also using two separate analyses to perform the budget calculations. In one analysis we calculate aquifer flows. In the second analysis we calculate discharge to streams and recharge from the general head boundary flows.

### **PARAMETERS AND ASSUMPTIONS:**

#### ***Carrizo-Wilcox, Queen City, and Sparta aquifers***

- We used version 2.02 of the groundwater availability model for the central part of the Carrizo-Wilcox, Queen City, and Sparta aquifers. See Dutton and others (2003) and Kelley and others (2004) for assumptions and limitations of the groundwater availability model for the central part of the Carrizo-Wilcox, Queen City, and Sparta aquifers.
- This groundwater availability model includes eight layers which generally represent the Sparta Aquifer (Layer 1), the Weches Confining Unit (Layer 2), the Queen City Aquifer (Layer 3), the Reklaw Confining Unit (Layer 4), the Carrizo Aquifer (Layer 5), the Upper Wilcox or Calvert Bluff Formation (Layer 6), the Middle Wilcox or Simsboro Formation (Layer 7), and the Lower Wilcox or Hooper Formation (Layer 8). Individual water budgets for the District were determined for the Sparta Aquifer (Layer 1), the Queen City Aquifer (Layer 3), and the Carrizo-Wilcox Aquifer (Layer 5 through Layer 8 collectively).
- Groundwater in the Carrizo-Wilcox, Queen City, and Sparta aquifers ranges from fresh to brackish in composition (Kelley and others, 2004). Groundwater with total dissolved solids of less than 1,000 milligrams per liter are considered fresh and total dissolved solids of 1,000 to 10,000 milligrams per liter are considered brackish.
- The model was run with MODFLOW-96 (Harbaugh and McDonald, 1996).

### ***Yegua-Jackson Aquifer***

- We used version 1.01 of the groundwater availability model for the Yegua-Jackson Aquifer. See Deeds and others (2010) for assumptions and limitations of the groundwater availability model.
- This groundwater availability model includes five layers which represent the outcrop section for the Yegua-Jackson Aquifer and younger overlying units (Layer 1), the upper portion of the Jackson Group (Layer 2), the lower portion of the Jackson Group (Layer 3), the upper portion of the Yegua Group (Layer 4), and the lower portion of the Yegua Group (Layer 5).
- An overall water budget for the District was determined for the Yegua-Jackson Aquifer (Layer 1 through Layer 5 collectively for the portions of the model that represent the Yegua-Jackson Aquifer).
- The model was run with MODFLOW-2000 (Harbaugh and others, 2000).

### ***Gulf Coast Aquifer System***

- We used version 2.01 of the groundwater availability model for the northern portion of the Gulf Coast Aquifer for this analysis. See Kasmarek and Robinson (2004) for assumptions and limitations of the model.
- The model has four layers which represent the Chicot Aquifer in layer one, the Evangeline Aquifer in layer two, the Burkeville confining unit in layer 3, and the Jasper Aquifer and parts of the Catahoula Formation in direct hydrologic communication with the Jasper Aquifer in layer 4.
- Water budgets for the district were determined for the Gulf Coast Aquifer (Layers 1 through 4).
- The model was run with MODFLOW-96 (Harbaugh and MacDonald, 1996).

## ***RESULTS:***

A groundwater budget summarizes the amount of water entering and leaving the aquifer according to the groundwater availability model. Selected groundwater budget components listed below were extracted from the model results for the aquifers located within the district and averaged over the duration of the calibration and verification portion of the model run in the district, as shown in Tables 1 through 5.

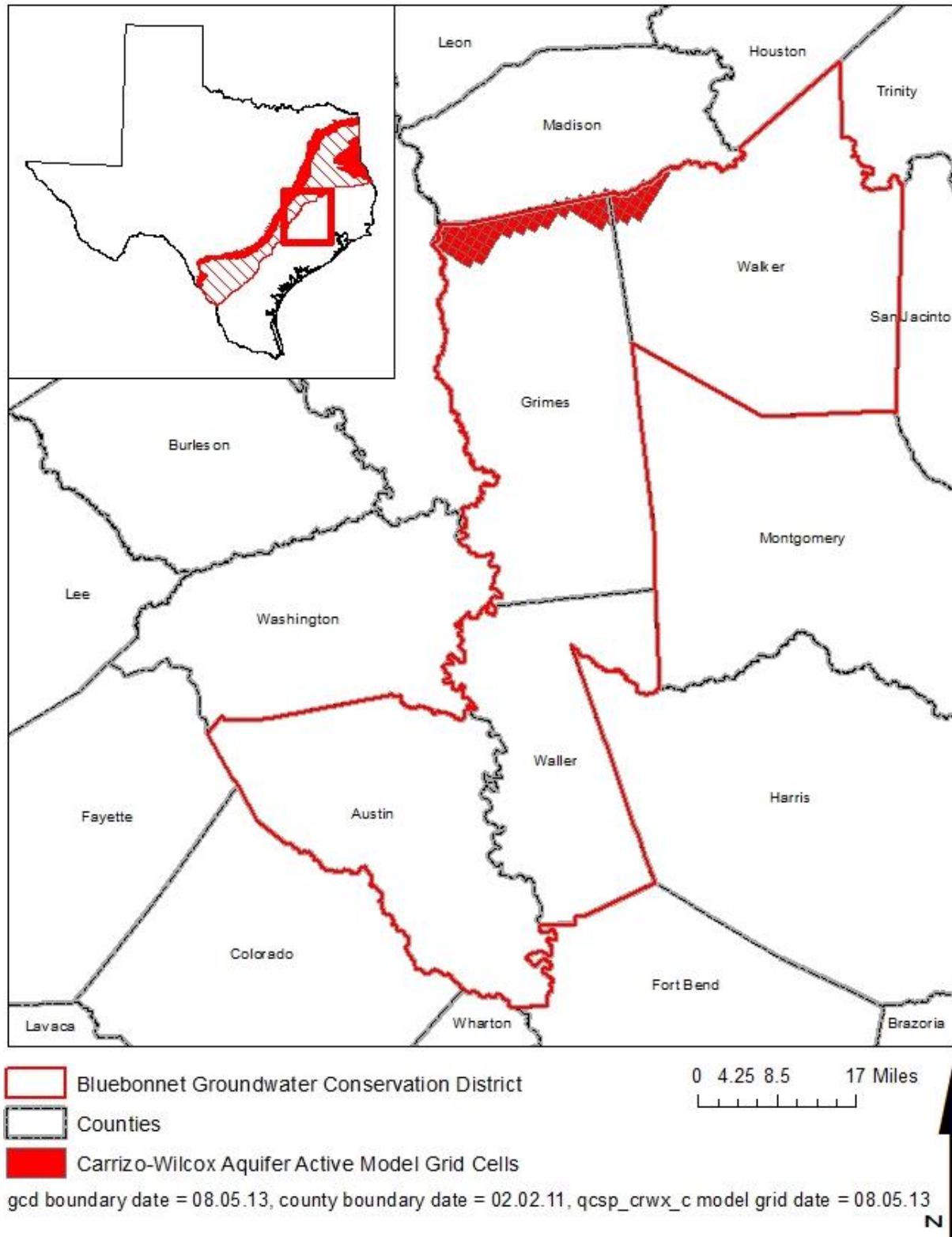
- Precipitation recharge—The areally distributed recharge sourced from precipitation falling on the outcrop areas of the aquifers (where the aquifer is exposed at land surface) within the district.
- Surface water outflow—The total water discharging from the aquifer (outflow) to surface water features such as streams, reservoirs, and drains (springs).
- Flow into and out of district—The lateral flow within the aquifer between the district and adjacent counties.
- Flow between aquifers—The net vertical flow between aquifers or confining units. This flow is controlled by the relative water levels in each aquifer or confining unit and aquifer properties of each aquifer or confining unit that define the amount of leakage that occurs. “Inflow” to an aquifer from an overlying or underlying aquifer will always equal the “Outflow” from the other aquifer.

The information needed for the District’s management plan is summarized in Tables 1 through 5. It is important to note that sub-regional water budgets are not exact. This is due to the size of the model cells and the approach used to extract data from the model. To avoid double accounting, a model cell that straddles a political boundary, such as a district or county boundary, is assigned to one side of the boundary based on the location of the centroid of the model cell. For example, if a cell contains two counties, the cell is assigned to the county where the centroid of the cell is located (Figures 1 through 5).

**TABLE 1: SUMMARIZED INFORMATION FOR THE CARRIZO-WILCOX AQUIFER THAT IS NEEDED FOR BLUEBONNET GROUNDWATER CONSERVATION DISTRICT'S GROUNDWATER MANAGEMENT PLAN. ALL VALUES ARE REPORTED IN ACRE-FEET PER YEAR AND ROUNDED TO THE NEAREST 1 ACRE-FOOT.**

<i>Management Plan requirement</i>	<i>Aquifer or confining unit</i>	<i>Results</i>
Estimated annual amount of recharge from precipitation to the district	Carrizo-Wilcox Aquifer	0
Estimated annual volume of water that discharges from the aquifer to springs and any surface water body including lakes, streams, and rivers	Carrizo-Wilcox Aquifer	0
Estimated annual volume of flow into the district within each aquifer in the district	Carrizo-Wilcox Aquifer	2,699
Estimated annual volume of flow out of the district within each aquifer in the district	Carrizo-Wilcox Aquifer	379
Estimated net annual volume of flow between each aquifer in the district	From the Carrizo-Wilcox Aquifer into the Reklaw Confining Unit	17
	From the Carrizo-Wilcox Aquifer to the downdip portions of the Carrizo and Wilcox formations	2,322

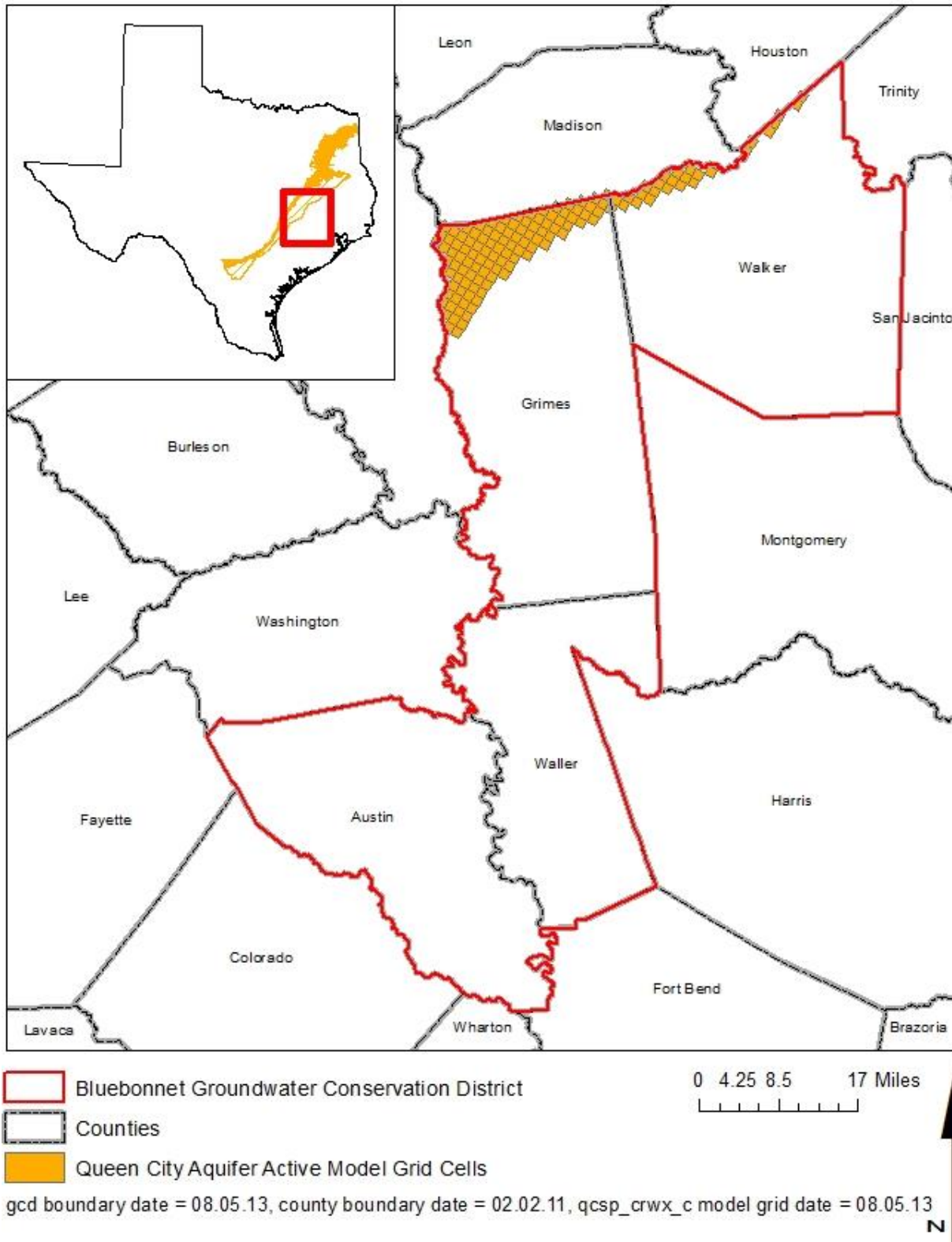




**FIGURE 1: AREA OF THE GROUNDWATER AVAILABILITY MODEL FOR THE CARRIZO-WILCOX AQUIFER FROM WHICH THE INFORMATION IN TABLE 1 WAS EXTRACTED (THE CARRIZO-WILCOX AQUIFER EXTENT WITHIN THE DISTRICT BOUNDARY).**

**TABLE 2: SUMMARIZED INFORMATION FOR THE QUEEN CITY AQUIFER THAT IS NEEDED FOR BLUEBONNET GROUNDWATER CONSERVATION DISTRICT'S GROUNDWATER MANAGEMENT PLAN. ALL VALUES ARE REPORTED IN ACRE-FEET PER YEAR AND ROUNDED TO THE NEAREST 1 ACRE-FOOT.**

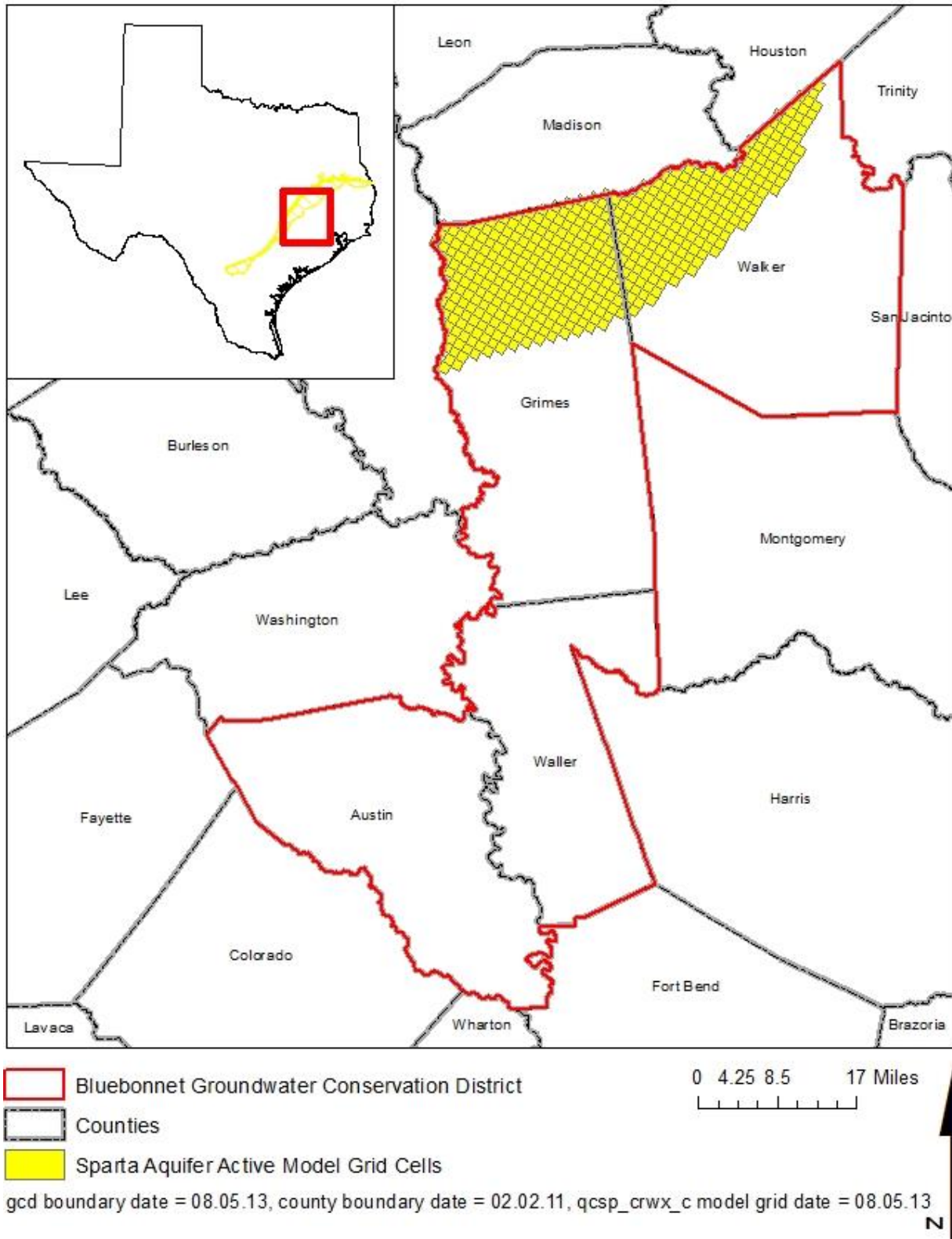
<i>Management Plan requirement</i>	<i>Aquifer or confining unit</i>	<i>Results</i>
Estimated annual amount of recharge from precipitation to the district	Queen City Aquifer	0
Estimated annual volume of water that discharges from the aquifer to springs and any surface water body including lakes, streams, and rivers	Queen City Aquifer	0
Estimated annual volume of flow into the district within each aquifer in the district	Queen City Aquifer	134
Estimated annual volume of flow out of the district within each aquifer in the district	Queen City Aquifer	98
Estimated net annual volume of flow between each aquifer in the district	From the Queen City Aquifer into the Weches Confining Unit	190
	From the Reklaw Confining Unit into the Queen City Aquifer	55
	From the downdip portion of the Queen City formation to the Queen City Aquifer	49



**FIGURE 2: AREA OF THE GROUNDWATER AVAILABILITY MODEL FOR THE QUEEN CITY AQUIFER FROM WHICH THE INFORMATION IN TABLE 2 WAS EXTRACTED (THE QUEEN CITY AQUIFER EXTENT WITHIN THE DISTRICT BOUNDARY).**

**TABLE 3: SUMMARIZED INFORMATION FOR THE SPARTA AQUIFER THAT IS NEEDED FOR BLUEBONNET GROUNDWATER CONSERVATION DISTRICT'S GROUNDWATER MANAGEMENT PLAN. ALL VALUES ARE REPORTED IN ACRE-FEET PER YEAR AND ROUNDED TO THE NEAREST 1 ACRE-FOOT.**

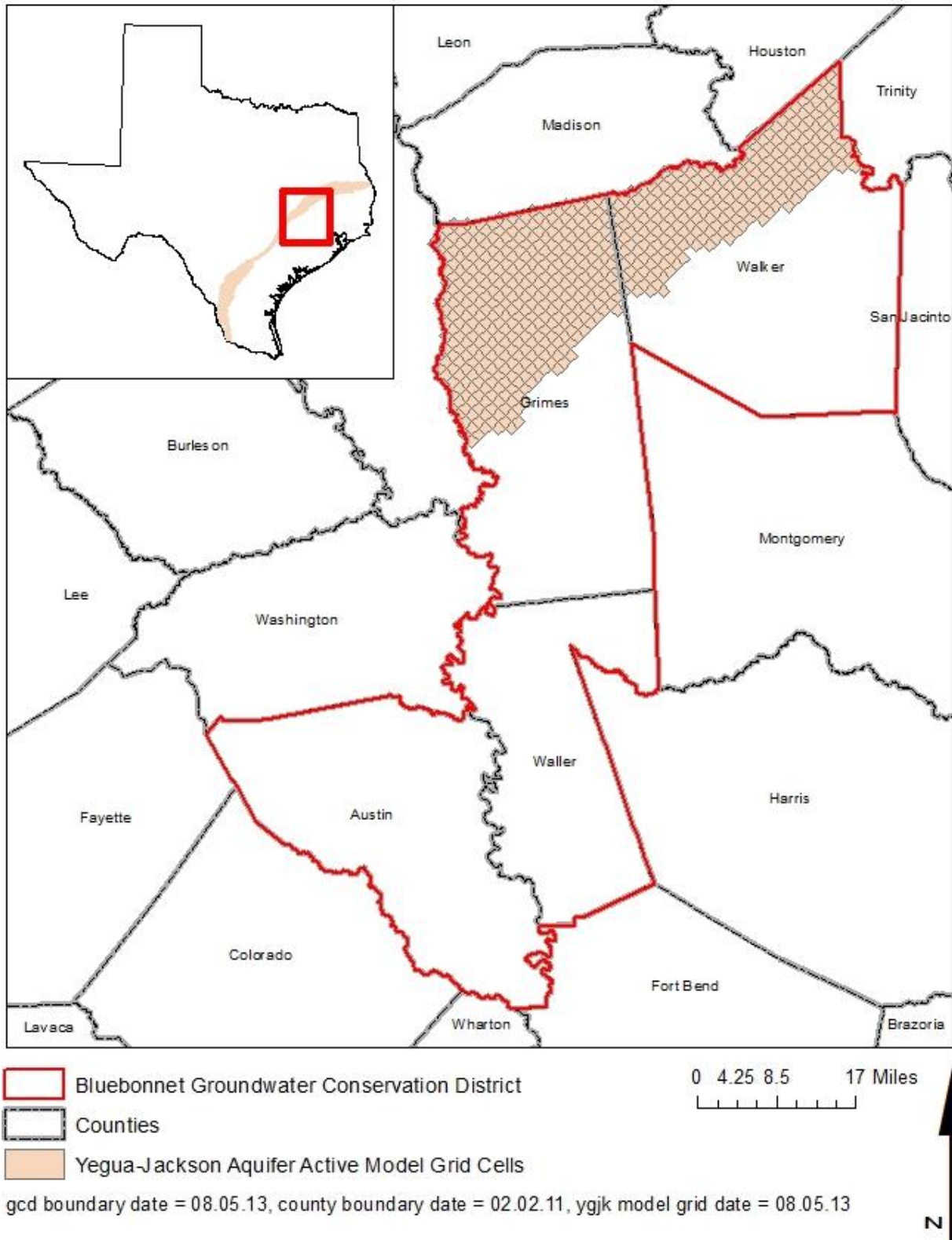
<i>Management Plan requirement</i>	<i>Aquifer or confining unit</i>	<i>Results</i>
Estimated annual amount of recharge from precipitation to the district	Sparta Aquifer	0
Estimated annual volume of water that discharges from the aquifer to springs and any surface water body including lakes, streams, and rivers	Sparta Aquifer	0
Estimated annual volume of flow into the district within each aquifer in the district	Sparta Aquifer	338
Estimated annual volume of flow out of the district within each aquifer in the district	Sparta Aquifer	482
Estimated net annual volume of flow between each aquifer in the district	From the Sparta Aquifer to overlying units	31
	From the Weches Confining Unit into the Sparta Aquifer	208
	From the Sparta Aquifer to the downdip portion of the Sparta Formation	49



**FIGURE 3: AREA OF THE GROUNDWATER AVAILABILITY MODEL FOR THE SPARTA AQUIFER FROM WHICH THE INFORMATION IN TABLE 3 WAS EXTRACTED (THE SPARTA AQUIFER EXTENT WITHIN THE DISTRICT BOUNDARY).**

**TABLE 4: SUMMARIZED INFORMATION FOR THE YEGUA-JACKSON AQUIFER THAT IS NEEDED FOR BLUEBONNET GROUNDWATER CONSERVATION DISTRICT'S GROUNDWATER MANAGEMENT PLAN. ALL VALUES ARE REPORTED IN ACRE-FEET PER YEAR AND ROUNDED TO THE NEAREST 1 ACRE-FOOT.**

<i>Management Plan requirement</i>	<i>Aquifer or confining unit</i>	<i>Results</i>
Estimated annual amount of recharge from precipitation to the district	Yegua-Jackson Aquifer	47,258
Estimated annual volume of water that discharges from the aquifer to springs and any surface water body including lakes, streams, and rivers	Yegua-Jackson Aquifer	38,660
Estimated annual volume of flow into the district within each aquifer in the district	Yegua-Jackson Aquifer	6,829
Estimated annual volume of flow out of the district within each aquifer in the district	Yegua-Jackson Aquifer	14,759
Estimated net annual volume of flow between each aquifer in the district	From the confined portion of the Yegua-Jackson units into the official Yegua-Jackson Aquifer	691
	From the Catahoula and overlying units into the Yegua-Jackson Aquifer	598



**FIGURE 4: AREA OF THE GROUNDWATER AVAILABILITY MODEL FOR THE YEGUA-JACKSON AQUIFER FROM WHICH THE INFORMATION IN TABLE 4 WAS EXTRACTED (THE YEGUA-JACKSON AQUIFER EXTENT WITHIN THE DISTRICT BOUNDARY).**

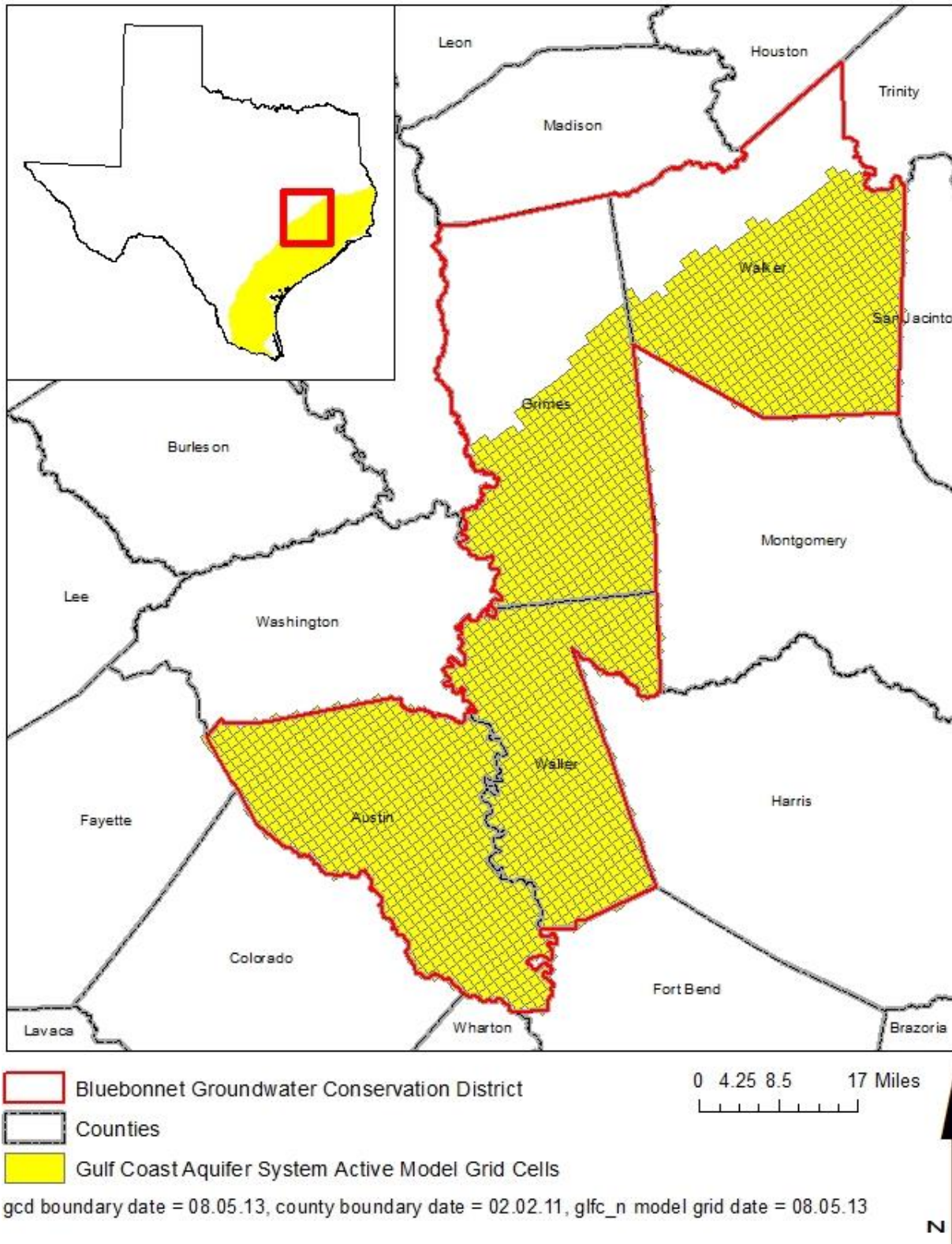
**TABLE 5: SUMMARIZED INFORMATION FOR THE GULF COAST AQUIFER SYSTEM THAT IS NEEDED FOR BLUEBONNET GROUNDWATER CONSERVATION DISTRICT'S GROUNDWATER MANAGEMENT PLAN. ALL VALUES ARE REPORTED IN ACRE-FEET PER YEAR AND ROUNDED TO THE NEAREST 1 ACRE-FOOT.**

<i>Management Plan requirement</i>	<i>Aquifer or confining unit</i>	<i>Results</i>
Estimated annual amount of recharge from precipitation to the district	Gulf Coast Aquifer System	54,201
Estimated annual volume of water that discharges from the aquifer to springs and any surface water body including lakes, streams, and rivers	Gulf Coast Aquifer System	6,997
Estimated annual volume of flow into the district within each aquifer in the district	Gulf Coast Aquifer System	12,646
Estimated annual volume of flow out of the district within each aquifer in the district	Gulf Coast Aquifer System	37,712
Estimated net annual volume of flow between each aquifer in the district	From the Gulf Coast Aquifer System into the Yegua-Jackson Aquifers <sup>1</sup>	598

---

<sup>1</sup> Calculated using the groundwater availability model for the Yegua-Jackson Aquifer.





**FIGURE 5: AREA OF THE GROUNDWATER AVAILABILITY MODEL FOR THE GULF COAST AQUIFER SYSTEM FROM WHICH THE INFORMATION IN TABLE 5 WAS EXTRACTED (THE GULF COAST AQUIFER SYSTEM EXTENT WITHIN THE DISTRICT BOUNDARY).**

## **LIMITATIONS:**

The groundwater model(s) used in completing this analysis is the best available scientific tool that can be used to meet the stated objective(s). To the extent that this analysis will be used for planning purposes and/or regulatory purposes related to pumping in the past and into the future, it is important to recognize the assumptions and limitations associated with the use of the results. In reviewing the use of models in environmental regulatory decision making, the National Research Council (2007) noted:

*“Models will always be constrained by computational limitations, assumptions, and knowledge gaps. They can best be viewed as tools to help inform decisions rather than as machines to generate truth or make decisions. Scientific advances will never make it possible to build a perfect model that accounts for every aspect of reality or to prove that a given model is correct in all respects for a particular regulatory application. These characteristics make evaluation of a regulatory model more complex than solely a comparison of measurement data with model results.”*

A key aspect of using the groundwater model to evaluate historic groundwater flow conditions includes the assumptions about the location in the aquifer where historic pumping was placed. Understanding the amount and location of historic pumping is as important as evaluating the volume of groundwater flow into and out of the district, between aquifers within the district (as applicable), interactions with surface water (as applicable), recharge to the aquifer system (as applicable), and other metrics that describe the impacts of that pumping. In addition, assumptions regarding precipitation, recharge, and interaction with streams are specific to particular historic time periods.

Because the application of the groundwater models was designed to address regional scale questions, the results are most effective on a regional scale. The TWDB makes no warranties or representations related to the actual conditions of any aquifer at a particular location or at a particular time.

It is important for groundwater conservation districts to monitor groundwater pumping and overall conditions of the aquifer. Because of the limitations of the groundwater model and the assumptions in this analysis, it is important that the groundwater conservation districts work with the TWDB to refine this analysis in the future given the reality of how the aquifer responds to the actual amount and location of pumping now and in the future. Historic precipitation patterns also need to be placed in context as future climatic conditions, such as dry and wet year precipitation patterns, may differ and affect groundwater flow conditions.

## **REFERENCES:**

- Deeds, N.E., Yan, T., Singh, A., Jones, T.L., Kelley, V.A., Knox, P.R., Young, S.C., 2010, Groundwater availability model for the Yegua-Jackson Aquifer: Final report prepared for the Texas Water Development Board by INTERA, Inc., 582 p.,  
[http://www.twdb.texas.gov/groundwater/models/gam/ygjk/YGJK\\_Model\\_Report.pdf](http://www.twdb.texas.gov/groundwater/models/gam/ygjk/YGJK_Model_Report.pdf).
- Dutton, A.R., Harden, B., Nicot, J.P., and O'Rourke, D., 2003, Groundwater availability model for the central part of the Carrizo-Wilcox Aquifer in Texas: Contract report to the Texas Water Development Board, 295 p.,  
[http://www.twdb.texas.gov/groundwater/models/gam/czwx\\_c/czwx\\_c.asp](http://www.twdb.texas.gov/groundwater/models/gam/czwx_c/czwx_c.asp).
- Harbaugh, A. W., 2009, Zonebudget Version 3.01, A computer program for computing subregional water budgets for MODFLOW ground-water flow models, U.S. Geological Survey Groundwater Software.
- Harbaugh, A.W., Banta, E.R., Hill, M.C., and McDonald, M.G., 2000, MODFLOW-2000, The U.S. Geological Survey modular ground-water model-User guide to modularization concepts and the ground-water flow process: U.S. Geological Survey, Open-File Report 00-92.
- Harbaugh, A. W., and McDonald, M.G., 1996, User's documentation for MODFLOW-96, an update to the U.S. Geological Survey modular finite-difference ground-water flow model: U.S. Geological Survey Open-File Report 96-485, 56 p.
- Kasmarek, M.C., and Robinson, J.L., 2004, Hydrogeology and Simulation of Groundwater Flow and Land-Surface Subsidence in the Northern Part of the Gulf Coast Aquifer System, Texas: United States Geological Survey Scientific investigations Report 2004-5102, 111 p.,  
[http://www.twdb.texas.gov/groundwater/models/gam/glfc\\_n/GLFC\\_N\\_Full\\_Report.pdf](http://www.twdb.texas.gov/groundwater/models/gam/glfc_n/GLFC_N_Full_Report.pdf).
- Kelley, V.A., Deeds, N.E., Fryar, D.G., and Nicot, J.P., 2004, Groundwater availability models for the Queen City and Sparta aquifers: Contract report to the Texas Water Development Board, 867 p.,  
<http://www.twdb.texas.gov/groundwater/models/gam/qcsp/qcsp.asp>.
- National Research Council, 2007, Models in Environmental Regulatory Decision Making Committee on Models in the Regulatory Decision Process, National Academies Press, Washington D.C., 287 p.,  
[http://www.nap.edu/catalog.php?record\\_id=11972](http://www.nap.edu/catalog.php?record_id=11972).
- Aschenbach, Eric, 2008, GAM Run 08-87: Texas Water Development Board, GAM Run 08-87 Report, 6 p.,  
<http://www.twdb.texas.gov/groundwater/docs/GAMruns/GR08-87.pdf>.