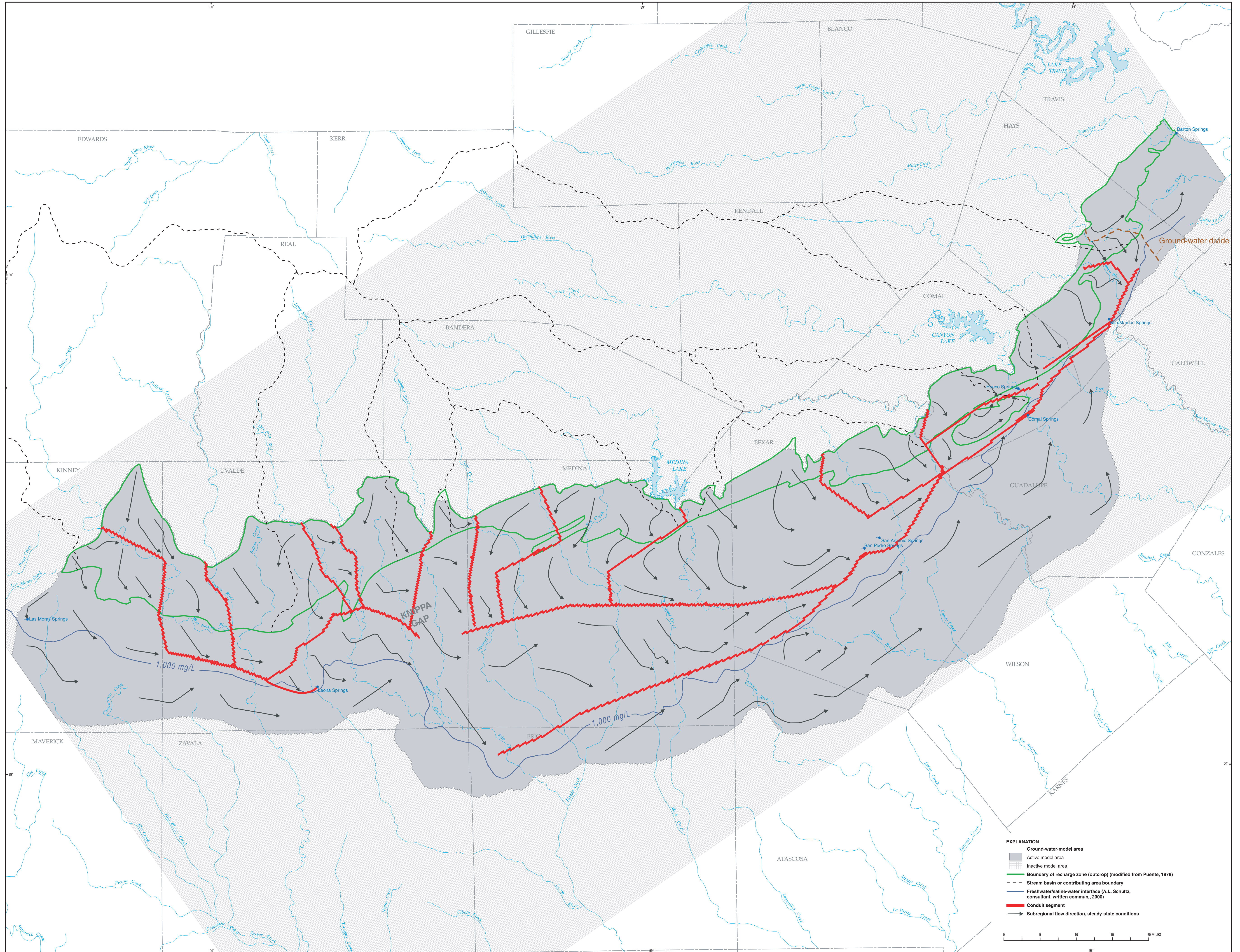


Base modified from U.S. Geological Survey digital data
Scales 1:250,000 (county boundaries) and 1:2,000,000 (hydrography)
Universal Transverse Mercator projection, Datum NAD 83
Zone 14

MAP SHOWING MEASURED WATER-LEVEL ALTITUDE IN EDWARDS AQUIFER AND SIMULATED ALTITUDE OF POTENTIOMETRIC SURFACE FOR ABOVE-NORMAL RAINFALL CONDITIONS, FEBRUARY 1975 (STRESS PERIOD 339), TRANSIENT SIMULATION, EDWARDS AQUIFER MODEL, SAN ANTONIO REGION, TEXAS

By
R.J. Lindgren, A.R. Dutton, S.D. Hovorka, S.R.H. Worthington, and Scott Painter
2004

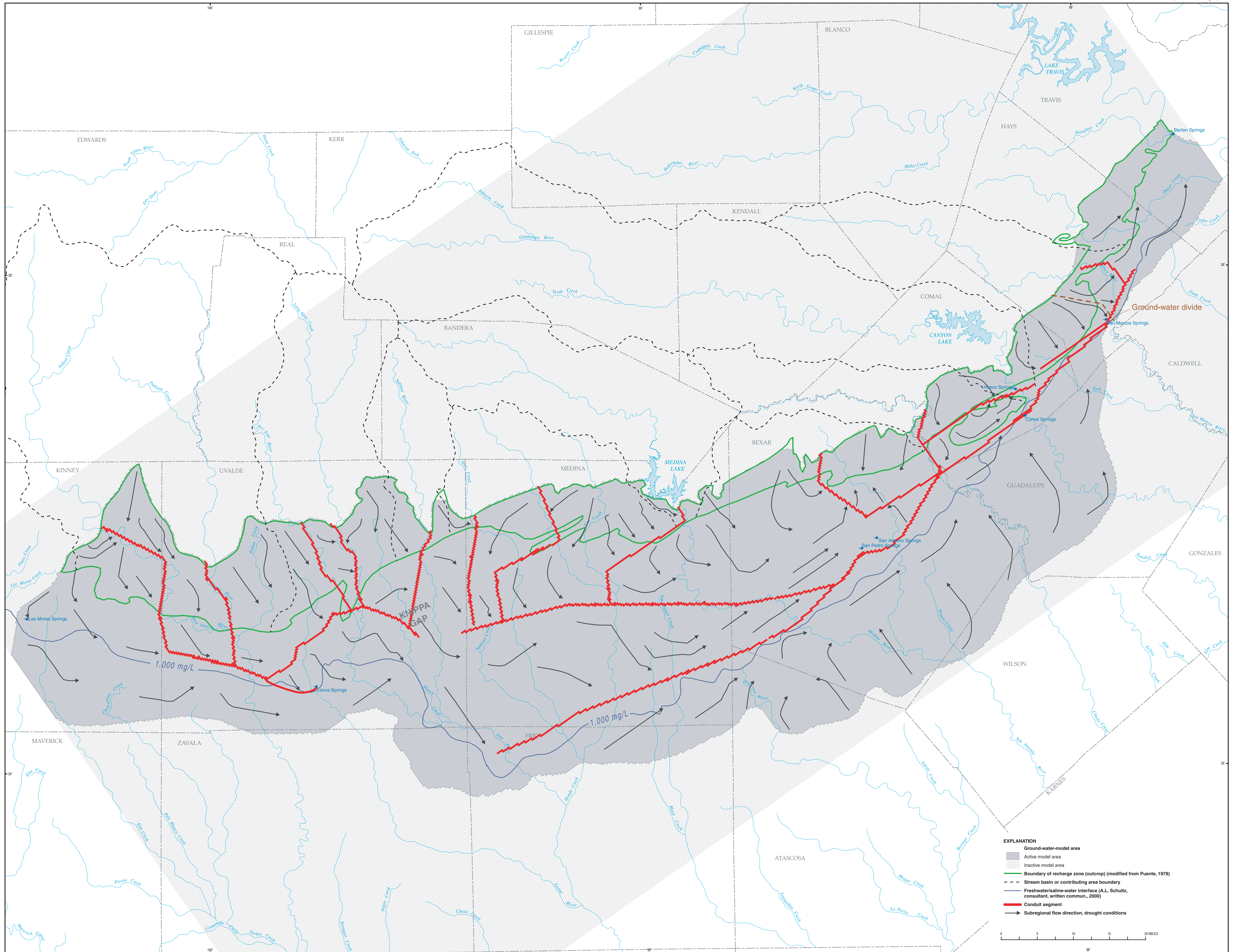


- EXPLANATION**
- Ground-water-model area
 - Active model area
 - Inactive model area
 - Boundary of recharge zone (outcrop) (modified from Puente, 1978)
 - Stream basin or contributing area boundary
 - Freshwater/saline-water interface (A.L. Schultz, consultant, written commun., 2000)
 - Conduit segment
 - Subregional flow direction, steady-state conditions

MAP SHOWING SIMULATED FLOW DIRECTIONS FOR STEADY-STATE SIMULATION (1939-46), EDWARDS AQUIFER MODEL, SAN ANTONIO REGION, TEXAS

By
R.J. Lindgren, A.R. Dutton, S.D. Hovorka, S.R.H. Worthington, and Scott Painter
2004

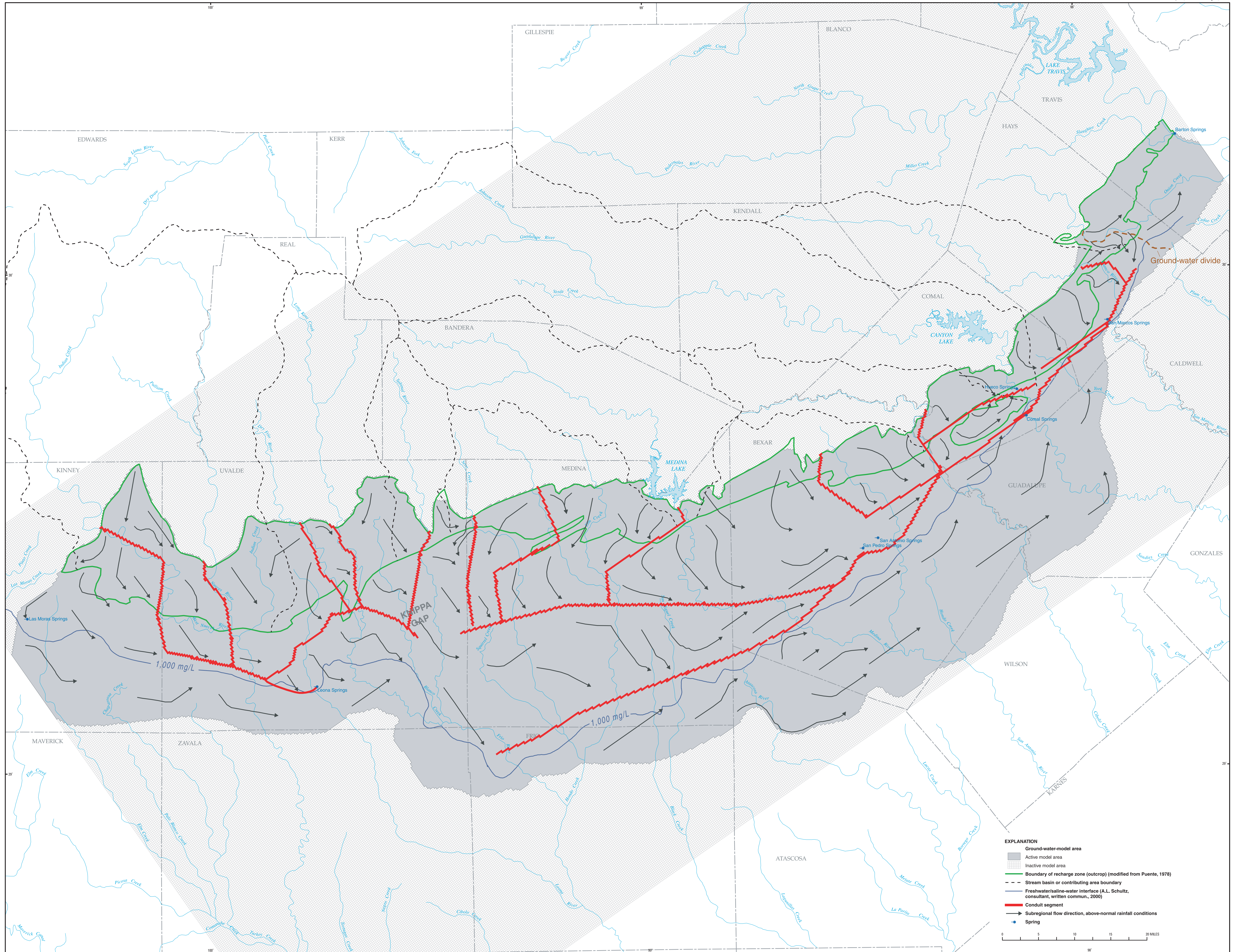
Base modified from U.S. Geological Survey digital data
Scales 1:250,000 (county boundaries) and 1:2,000,000 (hydrography)
Universal Transverse Mercator projection, Datum NAD 83
Zone 14



Base modified from U.S. Geological Survey digital data
Scales 1:250,000 (county boundaries) and 1:2,500,000 (hydrography)
Universal Transverse Mercator projection, Datum NAD 83
Zone 14

MAP SHOWING SIMULATED FLOW DIRECTIONS FOR DROUGHT CONDITIONS, AUGUST, 1956 (STRESS PERIOD 117),
TRANSIENT SIMULATION, EDWARDS AQUIFER MODEL, SAN ANTONIO REGION, TEXAS

By
R.J. Lindgren, A.R. Dutton, S.D. Hovorka, S.R.H. Worthington, and Scott Painter
2004



MAP SHOWING SIMULATED FLOW DIRECTIONS FOR ABOVE-NORMAL RAINFALL CONDITIONS, FEBRUARY 1975 (STRESS PERIOD 339),
TRANSIENT SIMULATION, EDWARDS AQUIFER MODEL, SAN ANTONIO REGION, TEXAS

By
R.J. Lindgren, A.R. Dutton, S.D. Hovorka, S.R.H. Worthington, and Scott Painter
2004